

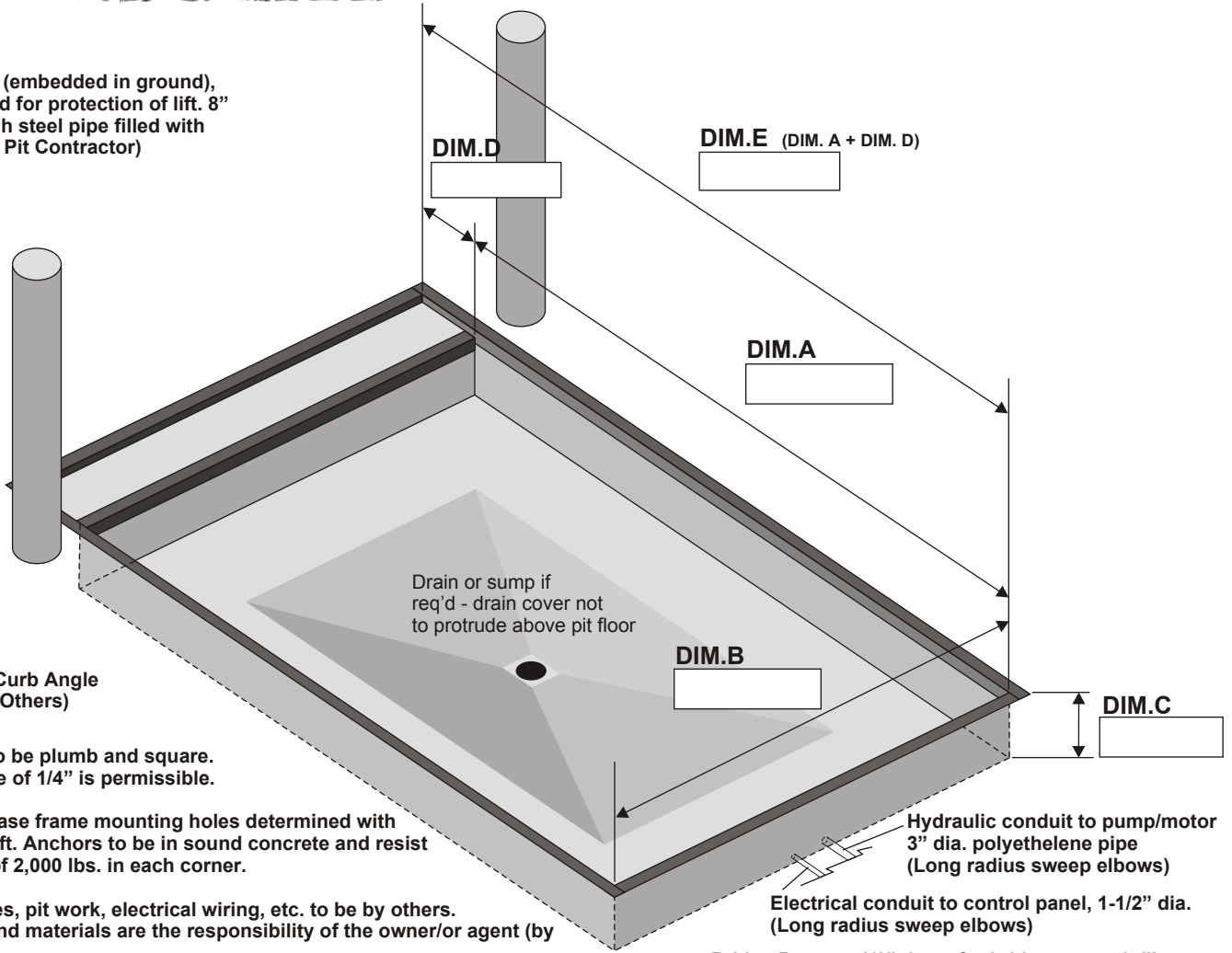


FIRST. AND BUILT TO LAST.

# HULK®

## SCISSORS LIFT PIT DETAIL 4 SIDED PIT (FULL WIDTH RECESSED BRIDGE)

Bumper post (embedded in ground), recommended for protection of lift. 8" dia. X 48" high steel pipe filled with concrete. (by Pit Contractor)



3"x 3"x 1/4" Curb Angle (Supplied by Others)

All pit walls to be plumb and square. Reverse slope of 1/4" is permissible.

Location of base frame mounting holes determined with selection of lift. Anchors to be in sound concrete and resist upward pull of 2,000 lbs. in each corner.

All curb angles, pit work, electrical wiring, etc. to be by others. All pit work and materials are the responsibility of the owner/or agent (by contractor)

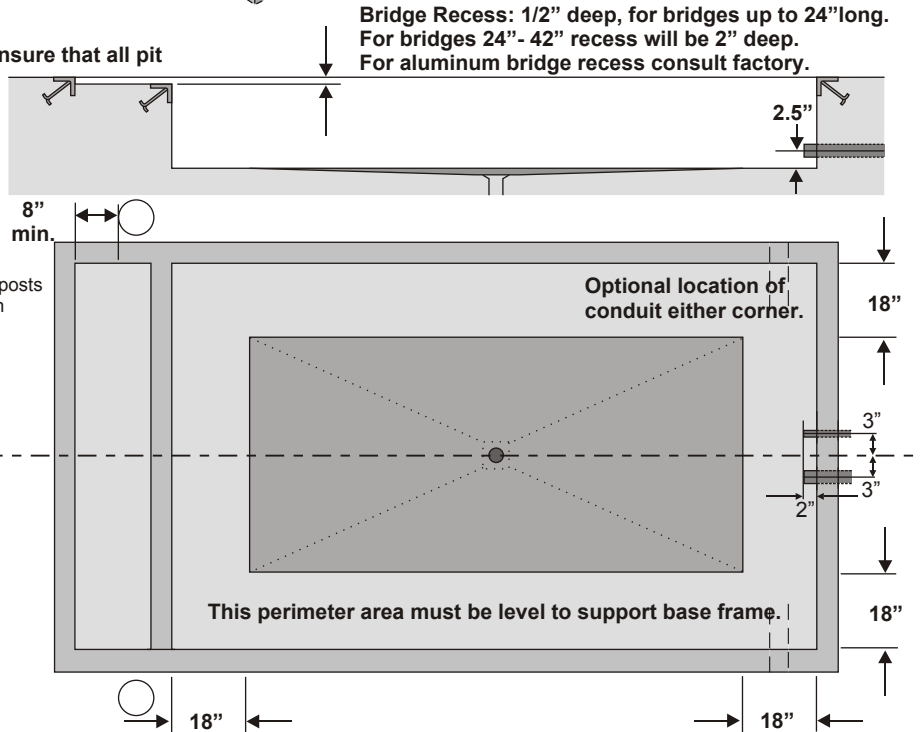
Reinforce concrete to meet local soil conditions and ensure that all pit work complies with local codes.

ALL CURB ANGLE JOINTS TO BE WELDED SECURELY.

IMPORTANT - Concrete behind Pit Steel must be well vibrated. 8" recommended minimum thickness for Pit Walls and Pit Floor

### NOTE 1

- Spring assisted bridges: Consult Factory.
- Hydraulic Pop Up Stop: Consult Factory.
- Hydraulic Lip: Consult Factory.
- Mechanical pop up stop: Consult Factory.
- Non standard bridge sizes: Consult Factory.
- Additional bridge sizes: Consult Factory.



NOTE: Kelley reserves the right to incorporate product updates at any time without prior notice.

## NOTICE

Pit Dimensional Tolerances are +/- 1/8" on squareness, Depth, Width and Length.  
KELLEY Assumes No Liability for Deviations beyond this Tolerance.

MODEL	PIT DIMENSIONS								
	Dim. "A" No Bridge	Dim. "A" 18" Bridge	Dim. "B"	Dim. "C" 4K to 6K	Dim. "C" 8K to 15K	Dim. "C" 20K	Dim. "D" 4K to 6K	Dim. "D" 8K to 20K	Dim. "E" **
48 x 96	98"	"E"- "D"	50"	12 1/4"	14 1/4"	18 1/4"	16"	15"	116"
60 x 96	98"	"E"- "D"	62"	12 1/4"	14 1/4"	18 1/4"	16"	15"	116"
72 x 96	98"	"E"- "D"	74"	12 1/4"	14 1/4"	18 1/4"	16"	15"	116"
72 x 108	110"	"E"- "D"	74"	12 1/4"	14 1/4"	18 1/4"	16"	15"	128"
72 x 120	122"	"E"- "D"	74"	12 1/4"	14 1/4"	18 1/4"	16"	15"	140"
72 x 144	146"	"E"- "D"	74"	12 1/4"	14 1/4"	18 1/4"	16"	15"	164"
84 x 96	98"	"E"- "D"	86"	12 1/4"	14 1/4"	18 1/4"	16"	15"	116"
84 x 108	110"	"E"- "D"	86"	12 1/4"	14 1/4"	18 1/4"	16"	15"	128"
84 x 120	122"	"E"- "D"	86"	12 1/4"	14 1/4"	18 1/4"	16"	15"	140"
84 x 144	146"	"E"- "D"	86"	12 1/4"	14 1/4"	18 1/4"	16"	15"	164"
96 x 96	98"	"E"- "D"	98"	12 1/4"	14 1/4"	18 1/4"	16"	15"	116"
96 x 108	110"	"E"- "D"	98"	12 1/4"	14 1/4"	18 1/4"	16"	15"	128"
96 x 120	122"	"E"- "D"	98"	12 1/4"	14 1/4"	18 1/4"	16"	15"	140"
96 x 144	146"	"E"- "D"	98"	12 1/4"	14 1/4"	18 1/4"	16"	15"	164"
SPECIAL	Dim "A"	Dim "B"	Dim "C"	Dim "D"	Dim "E"				

\*NOTE - Curb Angle Supplied by Others.  
\*\*See Note 1 on page 1 below table

### PROJECT INFORMATION

Job Name \_\_\_\_\_

Address \_\_\_\_\_

General Contractor \_\_\_\_\_

Kelley Distributor \_\_\_\_\_

Scissors Lift Model \_\_\_\_\_ Voltage \_\_\_\_\_

Quantity \_\_\_\_\_

### CONSTRUCTION APPROVAL

Company \_\_\_\_\_

Address \_\_\_\_\_

By \_\_\_\_\_

Date \_\_\_\_\_

NOTE: Kelley reserves the right to incorporate product updates at any time without prior notice.