

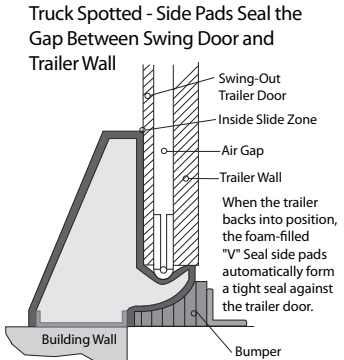
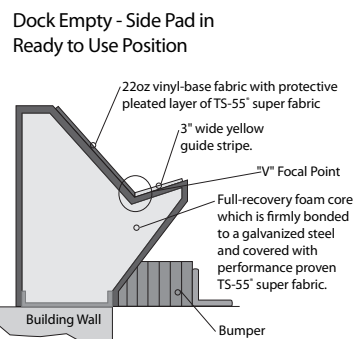
V-SEAL HEAD CURTAIN DOCK SEAL

V S H S E R I E S S P E C I F I C A T I O N S



Design Highlights

- V-shaped side pads provide better trailer access and seal hinge gaps on trailer swing-out doors
- Fabric style hood with fixed or adjustable head curtain seals gap between taller doors and building walls
- 22oz vinyl base fabric with protective pleated layer of TS-55® Super Fabric in critical wear areas provides exceptional wear resistance
- Full-length yellow stripes guide drivers to the dock
- Roll-formed galvanized steel framing reduces pressure on building wall
- 3-inch inside bottom flaps provide extra protection against outside elements



Project Information

Job Name _____
 Address _____
 General Contractor _____
 Distributor _____
 Quantity _____

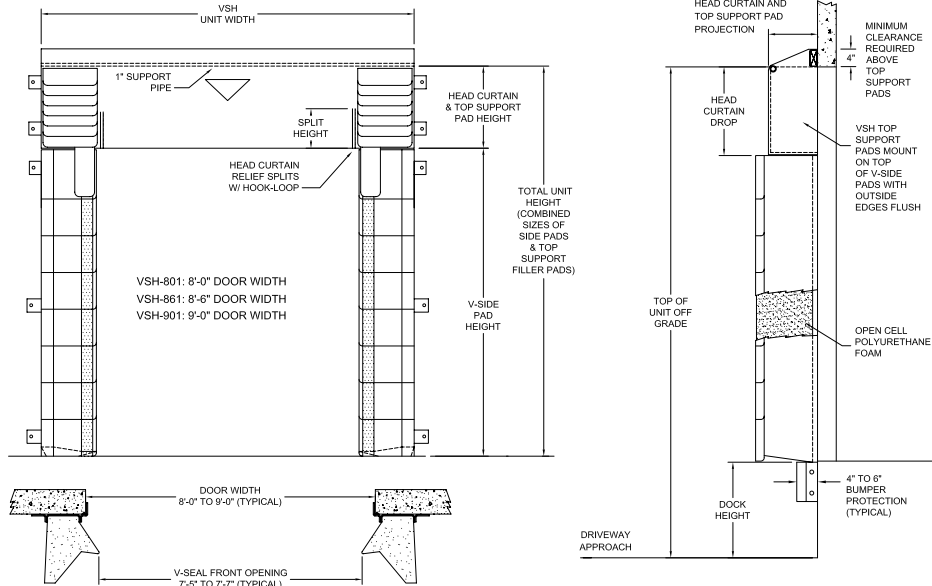
Certified For Construction

By _____
 Company _____
 Address _____
 Date _____



V-SEAL HEAD CURTAIN DOCK SEAL

V S H S E R I E S S P E C I F I C A T I O N S



APPLICATION DATA

Door Width: _____ ft. _____ in.
 Door Height: _____ ft. _____ in.
 Dock Height: _____ ft. _____ in.
 Bumper Protection*: _____ in.
 (*Includes bumper projection and any building wall/
 foundation offset or cantilever)

TRUCKS AND TRAILERS SERVICED

Width: _____ Max. _____ Min.
 Height: _____ Max. _____ Min.
 Length: _____ Max. _____ Min.
 Hydraulic Tailgate: Yes No
 Rear Step Section: Yes No
 Tailgate/Step Section Size: _____ In.
 Yard Jockeys: Yes No

QUANTITY _____

- Model** VSH-801(For 8'-0" Wide Doors) VSH-861(For 8'-6" Wide Doors) VSH-902 (For 9'-0" Wide Doors)
- Unit Width** 114" (VSH-801) 120" (VSH-861) 123" (VSH-902)
- Curtain Drop** 18" 24" 30" _____"
- Drop Curtain Splits** None 6" 12" 18" _____"
- Drop Curtain Options** None Pull Rope Assy D-Rings 2" Foam Front Sectional Foam Front
- Total Unit Height** _____"
- Material** 22oz Vinyl Base fabric with TS-55 Wear Pleats in Critical Wear Area
- Color** Black Tan Brown Blue Green
- Wood Blockout** None Tapered Non-Tapered
- Blockout Top Projection** 0" 2" 4" 6" 8" 10" 12" _____"
- Blockout Bottom Projection** 0" 2" 4" 6" 8" 10" 12" _____"
- Foam Blockout** None Tapered Non-Tapered
- Blockout Top Projection** 0" 2" 4"
- Blockout Bottom Projection** 0" 2" 4"
- Bottom Flaps (3" Inside Flaps are Standard)** 6" Inside _____" (Up to 12")
- Options** Door Numbers
 Flame Retardant Fabric & Foam
 Flame Retardant Fabric Only Flame Retardant Foam Only
- Mounting Brackets** Flats & Angles (VSH-902) 1 1/2" Offsets & Angles (VSH-801 & VSH-861)
 Angles

*Note: Consult factory for blockout application assistance.

*Conversions: To convert measurements to metric, see formulas below:

Inches x 25.4 = millimeters (Example: 4" x 25.4 = 101.6 mm)

Feet x .3048 = meters (Example: 12' x .3048 = 3.66 m)