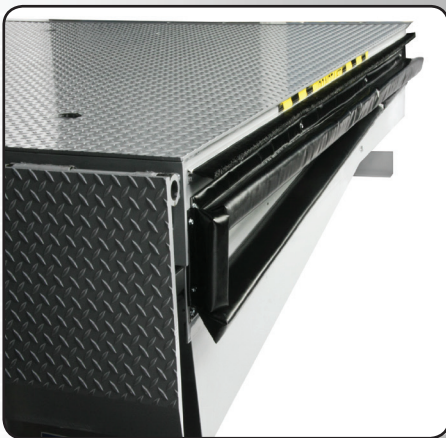


ENERGY GUARD®

Dock Leveler Sealing System Retrofit Specification



ENERGY GUARD Retrofit Kits
install easily with common tools



Dual side sealing system
is effective up to 9" above dock



ENERGY GUARD components seal all leveler openings

ENERGY GUARD® Retrofit Kits provide a superior perimeter seal along the sides and rear of your dock leveler and block dirt, debris, insects and most importantly prevents energy loss.

Design Highlights

- Effectively seals off gaps around sides and rear of dock leveler
- Side seal assemblies are open cell foam encapsulated with reinforced vinyl
- Exceptional rear hinge seal for all brands
- Effective perimeter seal (sides & back) up to 9" above dock
- Available for most Kelley® and Serco® dock levelers as well as some competitive dock levelers
- Design avoids risk of fabric being cut, torn or damaged by trailers or debris, resulting in expensive replacement
- Unrestricted access to pit for cleaning and dock leveler inspection. No curtains or fabric blocking access to the dock leveler and pit.
- "Low Profile" version available for narrow pit gaps.
- APS Resource warrants this product will be free from defects in material and workmanship under normal use for (1) year.

Project Information

Job Name _____

Address _____

General Contractor _____

Distributor _____

Model _____

Quantity _____

Certified For Construction

By _____

Company _____

Address _____

Date _____

ENERGY GUARD[®]

Dock Leveler Sealing System Retrofit Specification

ENERGY GUARD[®] Retrofit Kit Specification

General: ENERGY GUARD provides a superior perimeter seal along the sides and rear of the dock leveler and blocks dirt, debris, insects and most importantly prevents energy loss. The innovative design seals the gaps between the dock leveler and concrete pit walls - typically missed by traditional weatherseal or under-leveler seals attached to the front of the dock leveler. ENERGY GUARD prevents mass flow of air and minimizes transfer of energy into and out of the facility.

Side Seal Construction: The side seals are chemical resistant, 22 oz. PVC coated, polyester reinforced composite fabric. The fabric is rated to 30 degrees below zero (-30°F) with UV inhibitors and anti-mildew formulation and matte finish. The foam in the assemblies are triangular cut, 1 lb. per cubic foot, open cell polyurethane foam. The reinforcing bars are 1/8" x 1" aluminum bar stock, cut to the full length of the side seals to ensure maximum support. The side seal ends are sewn closed to minimize moisture absorption.

Note: "Low Profile" version available for narrow pit gaps.

Rear Hinge Seal Construction: For Kelley and Serco Brands, the rear seals are highly durable and resilient PVC-coated fabric with 2-ply polyester base fabric, also chemical resistant. Monofilament is added to the weft to provide inherent memory. For other brands, a PVC-coated foam triangle provides an exceptional seal.

Brush Seal Assembly: 1½" nylon brush weatherseal consisting of 1,000 bristles per inch. 1" nylon brush weatherseal included in "Low Profile" version.

Brush Cup Seals: Nylon brush weatherseals provided to fill chain openings. Plugs also provided to fill miscellaneous holes in deck assembly.

Operation: ENERGY GUARD provides an effective perimeter seal up to 9" above dock during operation.

Installation: Installs easily with common tools on most Kelley[®] and Serco[®] dock levelers as well as some competitive dock levelers

