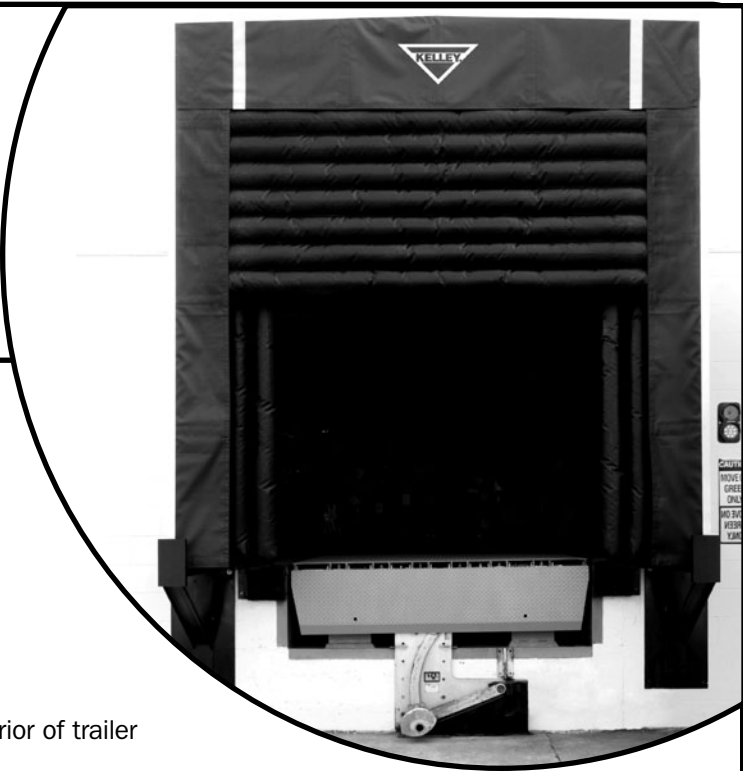




RIGID FRAME INFLATABLE SHELTER SPECIFICATIONS

K I - 4 5 0 S E R I E S



Design Highlights

- Provides full height and width access to interior of trailer
- Inflated by a high volume, low pressure 1/2 HP, 115V blower motor system after the trailer is positioned at the loading dock
- Side and head air chambers constructed from durable 10 oz/sq. yd. vinyl-coated fabric
- Roll-formed galvanized steel channel frame
- Before the trailer departs, air chambers retract from contact with the trailer and store behind side and head curtains
- Can be interlocked with other dock equipment for improved performance and efficiency

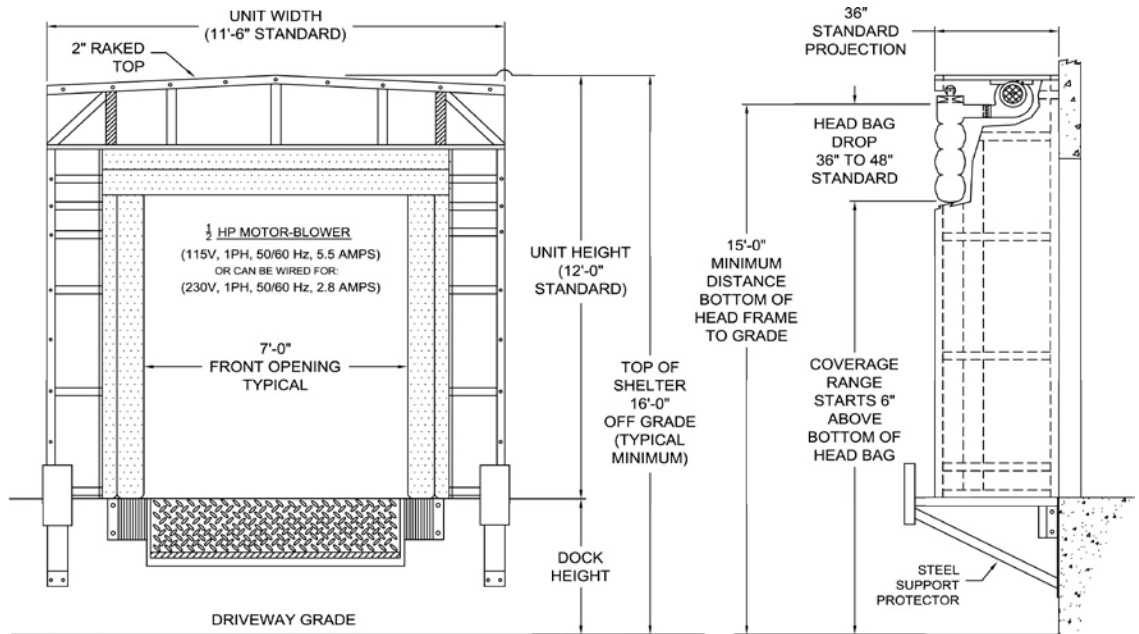
Project Information

Job Name _____
 Address _____
 General Contractor _____
 Distributor _____
 Quantity _____

Certified For Construction

By _____
 Company _____
 Address _____
 Date _____

RIGID FRAME INFLATABLE SHELTER SPECIFICATIONS



APPLICATION DATA

Door Width: _____ ft. _____ in.
 Door Height: _____ ft. _____ in.
 Dock Height: _____ ft. _____ in.
 Bumper Protection*: _____ in.
 (*Includes bumper projection and any building wall/
 foundation offset or cantilever)

TRUCKS AND TRAILERS SERVICED

Width: _____ Max. _____ Min.
 Height: _____ Max. _____ Min.
 Length: _____ Max. _____ Min.
 Hydraulic Tailgate: Yes No
 Rear Step Section: Yes No
 Tailgate/Step Section Size: _____ In.
 Yard Jockeys: Yes No

Quantity _____

Complete Unit Parts Only

(Indicate if parts are for existing steel or wood frame and the parts required including lefts and rights)

Galvanized Steel Channel Frame (Standard)

Motor/blower: Std. 1/2 HP, 115V, 50/60 Hz, 5.5 Amps (Switch w/pilot light included) None
 (Motor can be wired for 220V, 1Ph, 50/60 Hz, 2.8 Amps)

Unit Width: 11'-6" 12'-0" 12'-7" 13'-0"

Unit Height: 12'-0" 12'-6" 13'-0" 13'-6" 14'-0" _____"

(Note: Taller sizes are typically used for grade level applications)

Head Frame Style: Raked

Air Bag Fabric: 10oz Vinyl 16oz CSM **Air Bag Color:** Black

Storage Curtain Fabric: 22oz Vinyl 40oz Vinyl 40oz CSM

Curtain Colors: Black Tan Brown Blue Green

(Note: Colors only available with 22oz vinyl)

Head Bag Drop: 36" 42" 48" 54" 60"

Head Frame/Side Frame Projection: 36" 42" 48" 54" 60"

Steel Supports: None 42" 48" 54" 60" 66"

Options: Door Numbers (Specify) Electrical Interconnect (Consult Factory)

NOTE: Not all options are available with all models.

*Conversions: To convert measurements to metric, see formulas below:

Inches x 25.4 = millimeters (Example: 4" x 25.4 = 101.6 mm)

Feet x .3048 = meters (Example: 12' x .3048 = 3.66 m)

