

FOAM DOCK SEAL

WITH HEAD CURTAIN

DOCK SEAL SPECIFICATIONS

MODEL S-700



The Serco S-700 Head Curtain Dock Seal will accommodate a variety of trailer heights and is designed for doors that are nine feet tall or over.



Design Highlights

- Roll-formed Galvanized Steel Framing Warranted for 5 Years Against Rotting, Splitting or Cracking
- Endurance-tested Foam Core is Continuously Bonded to Frame Surface With Flexible, Non Flammable Adhesive
- A Wide Selection of Durable Coated Fabrics Provide Maximum Durability
- Top Of Hood is Tapered Forward And Securely Fastened to Building Wall
- Fiberglass Stays Add Stiffness to Hood Top to Prevent Sagging
- Hood Curtain Splits Offer Load Relief and higher Clearance
- Highly Resilient, Open-celled Polyurethane foam Keeps Original Shape and Compresses easily to Extend Seal Life
- Side Pad Bottoms are Tapered to Avoid Pinching and Wear
- All Pads are Vented for Air And Moisture Release
- Full Length Yellow Stripes Guide Drivers to the Dock

Project Information

Job Name _____

Address _____

General Contractor _____

Distributor _____

Model _____ Quantity _____

Certified For Construction

By _____

Company _____

Address _____

Date _____

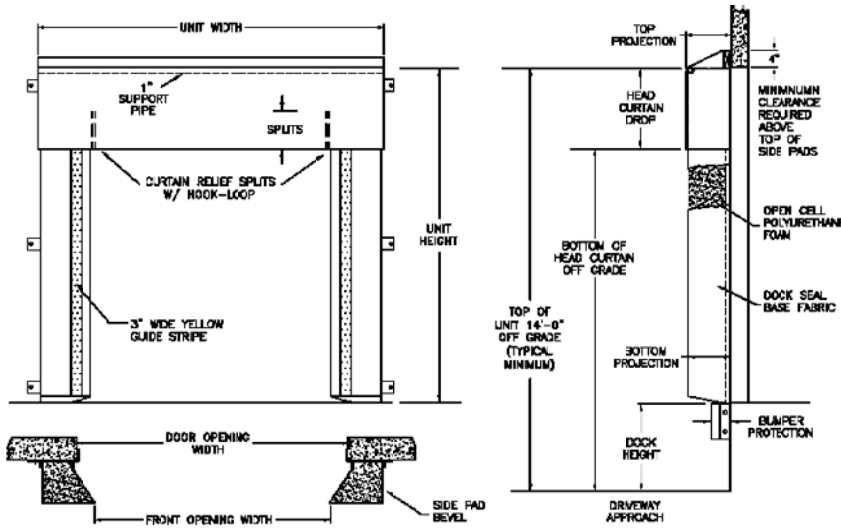


FOAM DOCK SEAL

WITH HEAD CURTAIN

DOCK SEAL SPECIFICATIONS

MODEL S-700



APPLICATION DATA

Door Width: _____ ft. _____ in.
 Door Height: _____ ft. _____ in.
 Dock Height: _____ ft. _____ in.
 Bumper Protection*: _____ in.
 (*Includes bumper projection and any building wall/foundation offset or cantilever)

TRUCKS AND TRAILERS SERVICED

Width: _____ Max. _____ Min.
 Height: _____ Max. _____ Min.
 Length: _____ Max. _____ Min.
 Hydraulic Tailgate: Yes No
 Rear Step Section: Yes No
 Tailgate/Step Section Size: In.
 Yard Jockeys: Yes No

QUANTITY _____

Head Curtain Height 18" 24" 30" 36" 42" 48" _____"

Head Curtain Splits 12" 18" 24" 30" 36" _____"

Unit Width _____"

Head Curtain Options None Pull Rope Assy O-Rings 2" Foam Front Sectional Foam Front

Side Pad Height _____"

Side Pad Back/Face 6/10 8/12 10/12 12/12 12/15 8/15 6/14 10/18 8/23

Base Material 22oz Vinyl 40oz Vinyl 40oz CSM XL-100™

Color Black Tan Brown Blue Green

Taper Yes No

Top Projection 10" 12" 14" 16" 18" 20" 22" _____"

Bottom Projection 10" 12" 14" 16" 18" 20" 22" _____"

Blockout None

Blockout Projection 2" 4" 6" 8" 10" 12" _____"

Wear Pleats None 4" 8" 16" Head and Side Pads Head Pad Corners Only

22oz Vinyl 40oz Vinyl 40oz CSM XL-100™ Black Tan Brown Blue Green

Wear Face None Head Curtain Side Pad

22oz Vinyl 40oz Vinyl 40oz CSM XL-100™ Black Tan Brown Blue Green

Reinforced Inside Face None Side Pad 4" Side Full Height

22oz Vinyl 40oz Vinyl 40oz CSM XL-100™ Black Tan Brown Blue Green

Options Bottom Flap Size: 3" 6" _____" Bottom Flap Location: Inside Inside Front All Sides

Door Numbers 24" Guide Stripes Flame Retardant Fabric Only Flame Retardant Foam Only

Side Pad Mounting Brackets Flats & Angles Angles

1 1/2" Offsets & Angles

*Conversions: To convert measurements to metric, see formulas below:

Inches x 25.4 = millimeters (Example: 4" x 25.4 = 101.6 mm)

Feet x .3048 = meters (Example: 12' x .3048 = 3.66 m)

*Note: Consult factory for blockout application assistance.

