

Product Summary

The Serco Ironside Model IDS-HP Dock Seal is designed to resist wear damage from the movement of air ride suspension trailers, intermodal trailers, sharp edges and yard spotters. The exclusive UHWR fabric offers up to 10 times the abrasion resistance of competitive fabrics tested.

Design Highlights

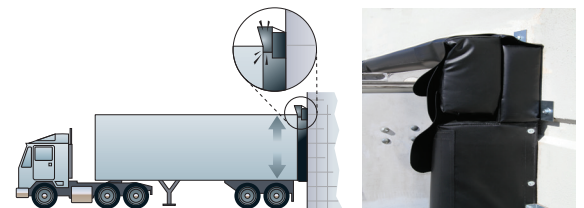
- Exclusive UHWR™ (Ultra High Wear Resistant) fabric on wear surfaces. Full height on side pads and full width on head pad
- Exclusive Guardian™ head pad helps defend against damage from yard spotters and air ride suspension trailers
- Exclusive roll-formed, galvanized steel framing
- Exclusive heat-sealed, full length, yellow guide stripes
- Endurance tested foam core is continuously bonded to frame surface with flexible, nonflammable adhesive
- Highly resilient, open-celled polyurethane foam keeps original shape and compresses easily to extend the seal life
- Side pad bottoms are tapered to avoid pinching and wear
- All pads are vented for air and moisture release
- Heavy-duty, galvanized steel mounting brackets included



Air ride suspension trailers can move up and down as much as 8" during loading/unloading.



Stationary head pads with wear pleats can get worn down over time by trailer movement, leading to detachment and resulting in an unprotected wall surface and loss of seal.



Guardian's 4" exposure wear panels move with the trailer, extending fabric life in key wear areas.

Project Information

Job Name _____
 Address _____
 General Contractor _____
 Distributor _____
 Quantity _____

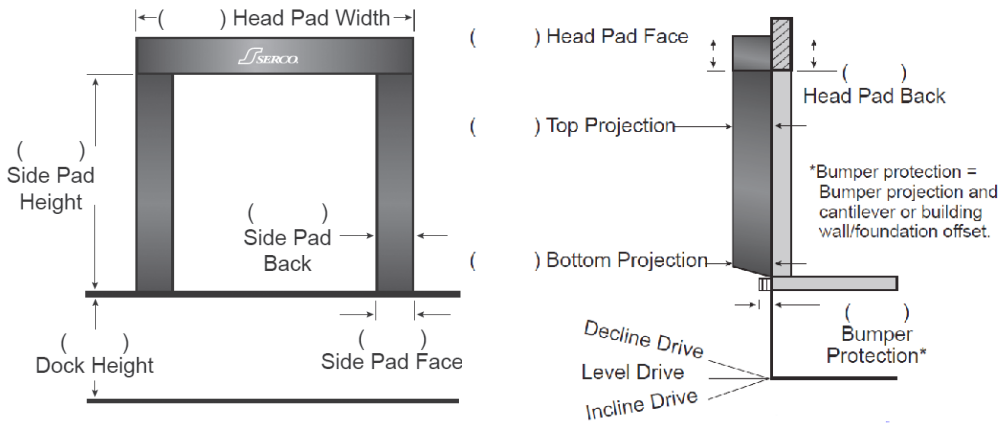
Certified For Construction

By _____
 Company _____
 Address _____
 Date _____

IRONSIDE™ DOCK SEAL

WITH HEAD PAD MODEL IDS-HP

DOCK SEAL SPECIFICATIONS



APPLICATION DATA

Door Width: _____ ft. _____ in.
 Door Height: _____ ft. _____ in.
 Dock Height: _____ ft. _____ in.
 Bumper Protection*: _____ in.
 (*Includes bumper projection and any building wall/foundation offset or cantilever)

TRUCKS AND TRAILERS SERVICED

Width: _____ Max. _____ Min.
 Height: _____ Max. _____ Min.
 Length: _____ Max. _____ Min.
 Hydraulic Tailgate: Yes No
 Rear Step Section: Yes No
 Tailgate/Step Section Size: In.
 Yard Jockeys: Yes No

QUANTITY _____

Guardian™ Head Pad Width _____ (Total Inches)

Guardian™ Head Pad Back/Face 12/12 18/18 24/24 12/15 12/18

Drop Curtain None 12" 18" 24" Velcro Strips Full Width

Side Pad Height _____ (Total Inches)

Side Pad Back/Face 12/12 6/10 8/12 10/12 10/15 8/15 12/15 10/18 6/14

Base Material 22 oz. Black Vinyl Standard

Taper Tapered Non-Tapered

Top Projection 8" 10" 12" 14" 16" 18" 20" 22" 24"

Bottom Projection 8" 10" 12" 14" 16" 18" 20" 22" 24"

Bottom Flaps 3" Inside Standard

Blockout None Top Projection _____" Bottom Projection _____"

Wear Face Full Height Side Pad & Full Width Head Pad with UHWR Fabric Standard, Black

Reinforced Inside Face Full Height Side Pad with UHWR Fabric Standard, Black

Options Door Numbers

Side Pad Mounting Brackets None Flats & Angles Angles 1 1/2" Offset Flats & Angles

*Conversions: To convert measurements to metric, see formulas below:

Inches x 25.4 = millimeters (Example: 4" x 25.4 = 101.6 mm)

Feet x .3048 = meters (Example: 12' x .3048 = 3.66 m)