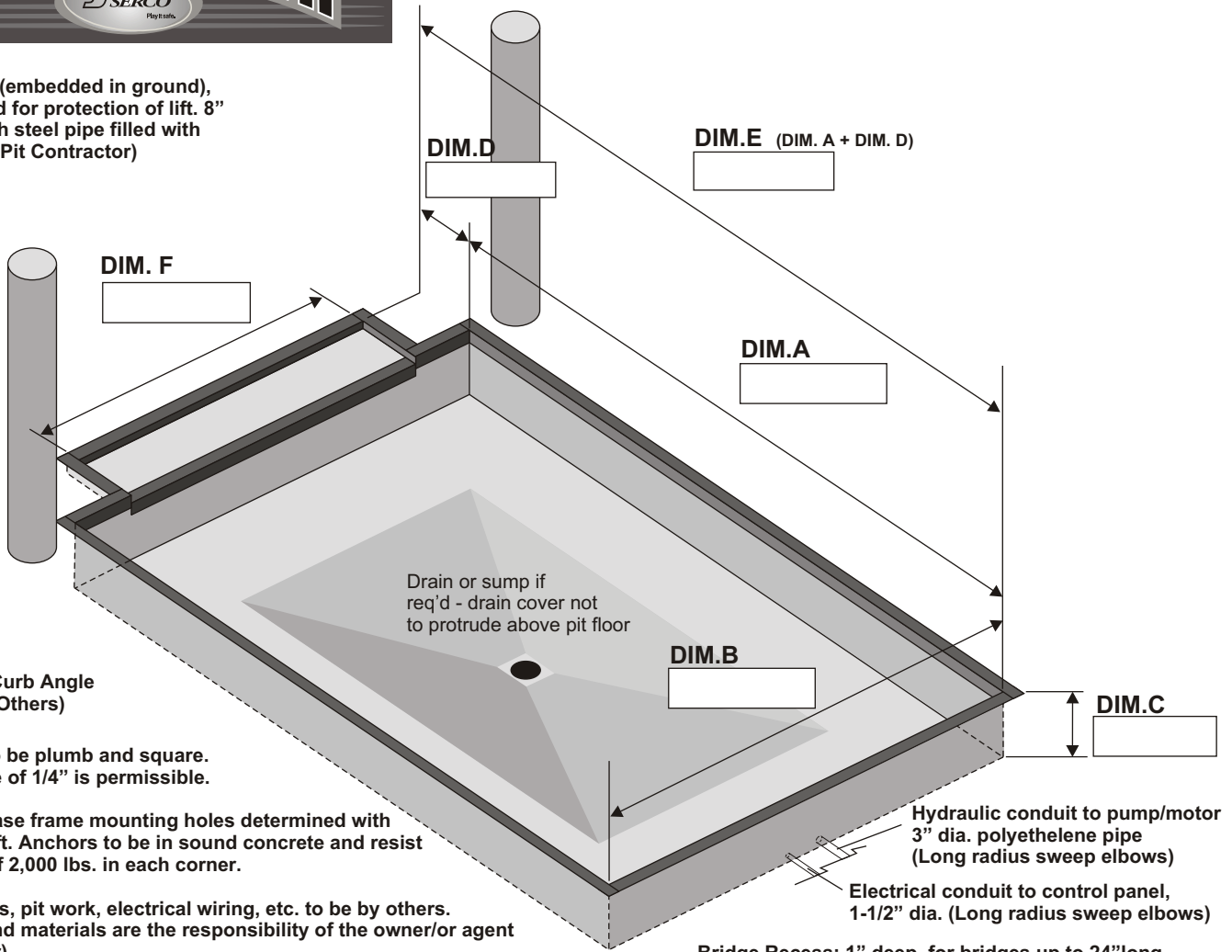




# SCISSORS LIFT PIT DETAIL 4 SIDED PIT (NARROW BRIDGE)

Bumper post (embedded in ground), recommended for protection of lift. 8" dia. X 48" high steel pipe filled with concrete. (by Pit Contractor)



3"x 3"x 1/4" Curb Angle (Supplied by Others)

All pit walls to be plumb and square. Reverse slope of 1/4" is permissible.

Location of base frame mounting holes determined with selection of lift. Anchors to be in sound concrete and resist upward pull of 2,000 lbs. in each corner.

All curb angles, pit work, electrical wiring, etc. to be by others. All pit work and materials are the responsibility of the owner/or agent (by contractor)

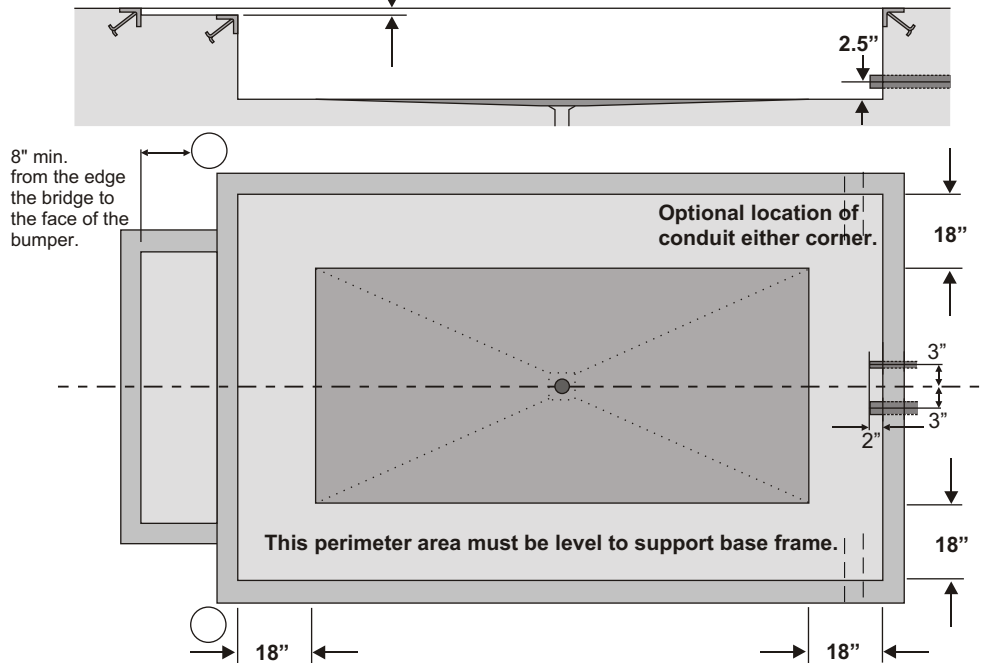
Reinforce concrete to meet local soil conditions and ensure that all pit work complies with local codes.

Bridge Recess: 1" deep, for bridges up to 24" long. For bridges 24"- 42" recess will be 2" deep. For aluminum bridge recess consult factory.

ALL CURB ANGLE JOINTS TO BE WELDED SECURELY.

IMPORTANT - Concrete behind Pit Steel must be well vibrated. 8" recommended minimum thickness for Pit Walls and Pit Floor

- NOTE 1**
- Spring assisted bridges: Consult Factory.
  - Mechanical pop up stop: Consult Factory.
  - Hydraulic Pop Up Stop: Consult Factory.
  - Hydraulic Lip: Consult Factory.
  - Non standard bridge sizes: Consult Factory.
  - Additional bridge sizes: Consult Factory.



NOTE: Serco reserves the right to incorporate product updates at any time without prior notice.

## NOTICE

Pit Dimensional Tolerances are +/- 1/8" on squareness, Depth, Width and Length.  
SERCO Assumes No Liability for Deviations beyond this Tolerance.

| MODEL    | PIT DIMENSIONS        |                        |          |                      |                       |                 |                      |                       |          |                        |
|----------|-----------------------|------------------------|----------|----------------------|-----------------------|-----------------|----------------------|-----------------------|----------|------------------------|
|          | Dim. "A"<br>No Bridge | Dim. "A"<br>18" Bridge | Dim. "B" | Dim. "C"<br>4K to 6K | Dim. "C"<br>8K to 15K | Dim. "C"<br>20K | Dim. "D"<br>4K to 6K | Dim. "D"<br>8K to 20K | Dim. "E" | Dim. "F"<br>72" Bridge |
| 48 x 96  | 98"                   | "E"- "D"               | 50"      | 12 1/4"              | 14 1/4"               | 18 1/4"         | 16"                  | 15"                   | 116"     | Bridge width + 2"      |
| 60 x 96  | 98"                   | "E"- "D"               | 62"      | 12 1/4"              | 14 1/4"               | 18 1/4"         | 16"                  | 15"                   | 116"     |                        |
| 72 x 96  | 98"                   | "E"- "D"               | 74"      | 12 1/4"              | 14 1/4"               | 18 1/4"         | 16"                  | 15"                   | 116"     |                        |
| 72 x 108 | 110"                  | "E"- "D"               | 74"      | 12 1/4"              | 14 1/4"               | 18 1/4"         | 16"                  | 15"                   | 128"     |                        |
| 72 x 120 | 122"                  | "E"- "D"               | 74"      | 12 1/4"              | 14 1/4"               | 18 1/4"         | 16"                  | 15"                   | 140"     |                        |
| 72 x 144 | 146"                  | "E"- "D"               | 74"      | 12 1/4"              | 14 1/4"               | 18 1/4"         | 16"                  | 15"                   | 164"     |                        |
| 84 x 96  | 98"                   | "E"- "D"               | 86"      | 12 1/4"              | 14 1/4"               | 18 1/4"         | 16"                  | 15"                   | 116"     |                        |
| 84 x 108 | 110"                  | "E"- "D"               | 86"      | 12 1/4"              | 14 1/4"               | 18 1/4"         | 16"                  | 15"                   | 128"     |                        |
| 84 x 120 | 122"                  | "E"- "D"               | 86"      | 12 1/4"              | 14 1/4"               | 18 1/4"         | 16"                  | 15"                   | 140"     |                        |
| 84 x 144 | 146"                  | "E"- "D"               | 86"      | 12 1/4"              | 14 1/4"               | 18 1/4"         | 16"                  | 15"                   | 164"     |                        |
| 96 x 96  | 98"                   | "E"- "D"               | 98"      | 12 1/4"              | 14 1/4"               | 18 1/4"         | 16"                  | 15"                   | 116"     |                        |
| 96 x 108 | 110"                  | "E"- "D"               | 98"      | 12 1/4"              | 14 1/4"               | 18 1/4"         | 16"                  | 15"                   | 128"     |                        |
| 96 x 120 | 122"                  | "E"- "D"               | 98"      | 12 1/4"              | 14 1/4"               | 18 1/4"         | 16"                  | 15"                   | 140"     |                        |
| 96 x 144 | 146"                  | "E"- "D"               | 98"      | 12 1/4"              | 14 1/4"               | 18 1/4"         | 16"                  | 15"                   | 164"     |                        |
| SPECIAL  | Dim "A"               | Dim "B"                | Dim "C"  | Dim "D"              | Dim "E"               | Dim "F"         |                      |                       |          |                        |

\*NOTE - Curb Angle Supplied by Others.  
\*\*See Note 1 on page 1 below table

### PROJECT INFORMATION

Job Name \_\_\_\_\_

Address \_\_\_\_\_

General Contractor \_\_\_\_\_

Serco Distributor \_\_\_\_\_

Scissors Lift Model \_\_\_\_\_ Voltage \_\_\_\_\_

Quantity \_\_\_\_\_

### CONSTRUCTION APPROVAL

Company \_\_\_\_\_

Address \_\_\_\_\_

By \_\_\_\_\_

Date \_\_\_\_\_

NOTE: Serco reserves the right to incorporate product updates at any time without prior notice.