

SI-310

INFLATABLE RAIL SHELTER

AIR INFLATABLE SPECIFICATIONS

The Serco SI-310 air inflatable dock shelter provides protection against the elements for a wide variety of rail dock applications. Sturdy upward biased track-trolley assemblies support air chambers from above.



Feature Highlights:

- Top, side and optional bottom air chambers constructed from durable 10 oz./sq. yd. vinyl-coated fabric
- Provides excellent sealing for a wide variety of rail cars and rail applications
- Conforms to irregularities present on the side of some rail cars
- Inflated by a high volume, low pressure moto
- Unit retraction assisted by upward biased track-trolley support system
- Can be sized to accommodate a variety of rail ramp configurations

Project Information

Job Name _____
 Address _____
 General Contractor _____
 Serco Distributor _____
 Quantity _____

Certified For Construction

By _____
 Date _____
 Company _____
 Address _____

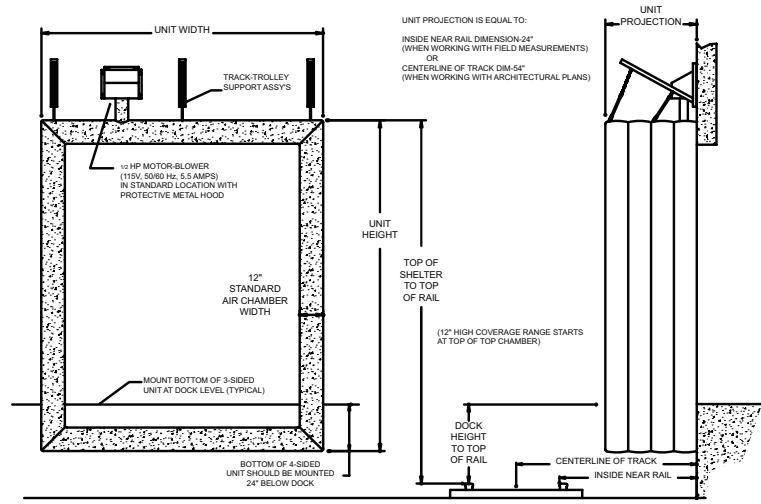


Play it safe.

SI-310

INFLATABLE RAIL SHELTER

AIR INFLATABLE SPECIFICATIONS



Dock Configuration:

APPLICATION DATA

Door Width: _____ ft. _____ in.

Door Height: _____ ft. _____ in.

Dock Height off Top of Rail: _____ in.

Dock to Inside Near Rail: _____ in.

Dock to Centerline of Track: _____ in.

(Note: Use "Inside Near Rail" dimension when using field measurements or "Centerline of Track" dimension when working with architectural plans. You do not need both dimensions.)

Quantity _____

Please check box from each category

Complete Unit Parts Only (Indicate Parts Required. For Replacement Air Bag, Specify Air Inlet Tube Location.)

Model: SI-310-3 (3-Sided Cover and Frame) SI-310-4 (4-Sided Cover and Frame)

(SI-310 4-sided unit should be sized so that bottom can be mounted 24" below dock floor while maintaining top coverage range.)

Standard Frame: 2" X 12" Pressure Treated Wood Framing

Motor/blower: 1/2 HP, 115V, 50/60 Hz, 5.5 Amps (Switch w/pilot light included)

(Motor can be wired for 220V, 1Ph, 50/60 Hz, 2.8 Amps)

Standard Single Motor/blower

Optional Two Motor/blowers (Required when total volume of shelter exceeds 275 cubic feet.)

None

Air Inlet Tube Location: Standard Top Left Center Top Right Specify

Unit Width: 12'-0" 13'-0" 14'-0" 15'-0" 16'-0" 17'-0" 18'-0" _____"

(Add 24" to door width to determine unit width, minimum width is 12'-0")

Unit Height: 12'-0" 13'-0" 14'-0" 15'-0" 16'-0" _____"

(Standard minimum unit height for 4-sided unit is 13'-0")

Projection: 48" 54" 60" 66" 72" 78" 84" _____"

Air Bag Fabric: 10oz Vinyl 16oz Hypalon

Color Choices: Black Blue

Optional Head Curt Drop: 48" 54" 60" 66" 72" 78" 84" _____"



Play it safe.